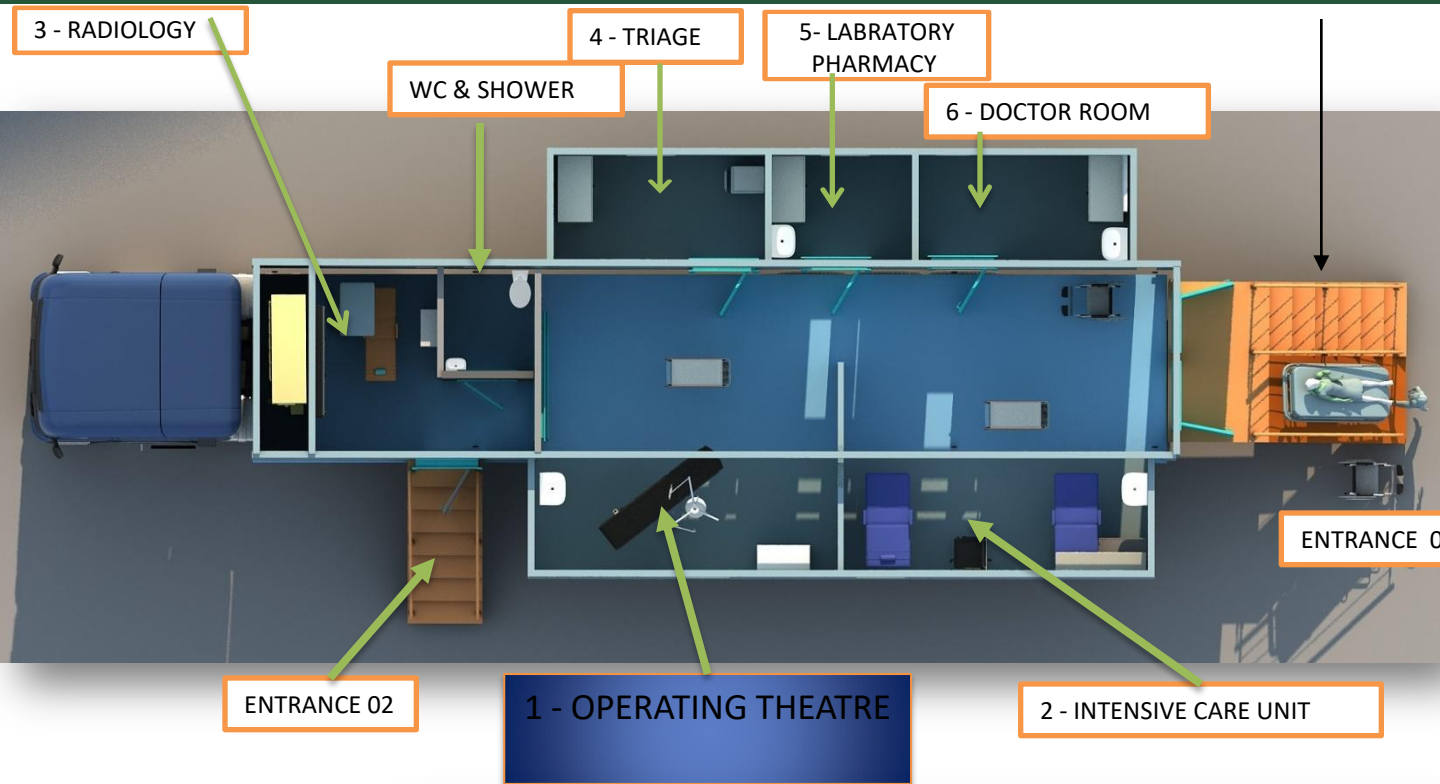


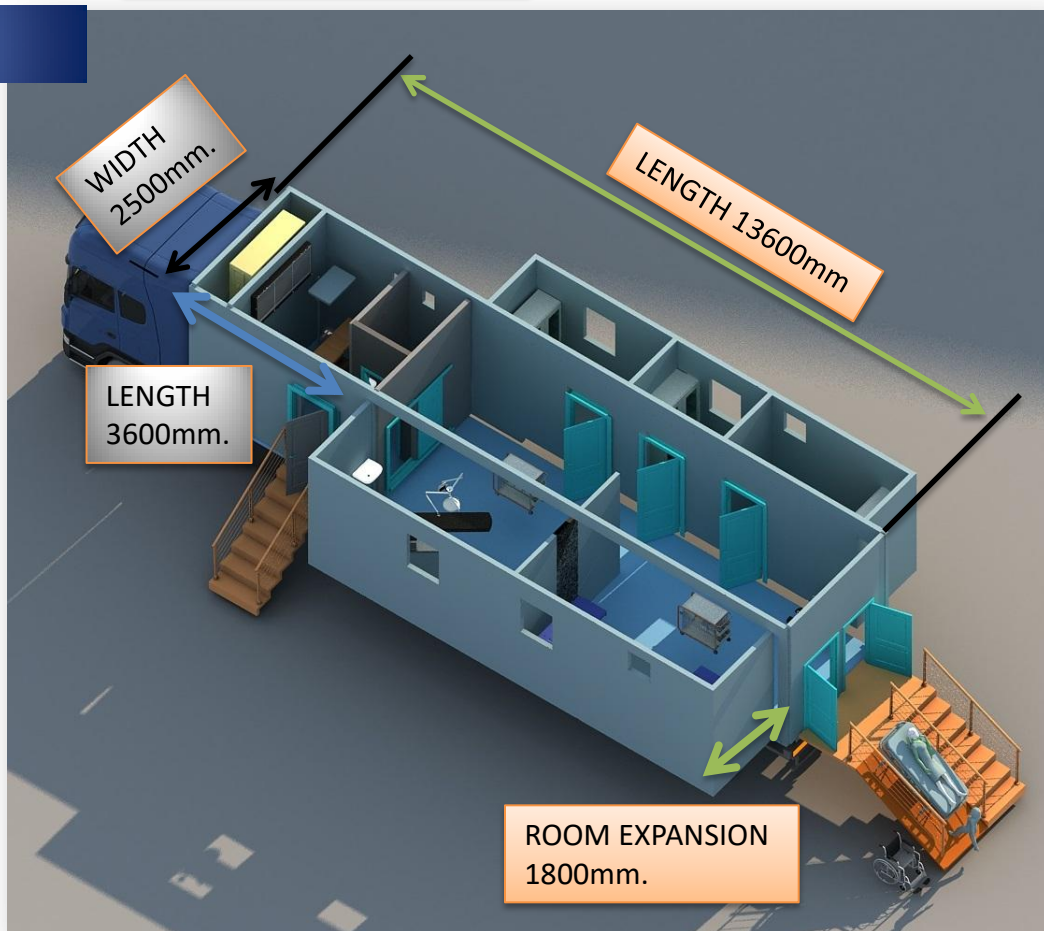
EXPANDABLE CONTAINER-TRAILER TECHNICAL SPECIFICATIONS

1. DIMENSIONS
2. MEDICAL UNITS
3. EXPANDABLE TRAILER TECHNICAL SPECIFICATIONS
4. HYDRAULIC SYSTEM
5. TRAILER TECHNICAL SPECIFICATIONS
6. REFERENCES& CERTIFICATIONS





1. DIMENSIONS



2. MEDICAL UNITS

01 - OPERATING THEATRE UNIT

CONTAINER SPECIFICATION

Floor	PVC 2 mm Anti bacterial-Static
Internal Wall	Outside Wall
50mm Polyuretane pannel	(2 mm thickness steel sheet)
Aluminium Window	Double Glassed Window
A / C	Medical Air Condition
Lighting	2 lamps (2x36W each) Waterproof/Dust Proof Housing
Fire Extinguisher	6 kg Dry Chemical

EQUIPMENT	UNIT
Operating Table-Electrical	1
Operating Lamps-ceiling type	1
Anaesthesia Machine & Monitor	1
Vital signs monitor	1
ECG machine	1
Defibrillator	1
Infusion & syringe pump set	1
Instruments table	1
Medical Waste Box	1
Suction device	1
General purpose instrument Set	1
Minor surgical set	1
Orthopaedic Set	1
Trolley for Operating Theatre	1
Furniture	1



Medical Gas System



Operating Theatre door system will be remote access control



2. MEDICAL UNITS

CONTAINER SPECIFICATION

Floor	PVC 2 mm Anti bacterial-Static
Internal Wall	Outside Wall
50mm Polyuretane pannel	(2 mm thickness steel sheet)
Aluminium Window	Double Glassed Window
A / C	Medical Air Condition
Lighting	2 lamps (2x36W each) Waterproof/Dust Proof Housing
Fire Extinguisher	6 kg Dry Chemical



Medical Gas System



ICU door system will be remote access control

EQUIPMENT	UNIT
ICU Bed with mattrre sses	2
Over bed table	2
Vital signs monitor	2
ECG machine	1
Nebulizer	1
Infusion & syringe p ump set	1
Suction device	1
Medical Waste Box	1
Suction device	1
Infusion & syringe p ump set	1
Ventilator	1
Drib stand	1
Trolley for ICU	1
Ciniocotomy set	2
Stethoscope / stetoskop	2
Ophthalmoscope / Oftalmoskop	2
Otoscope / Otoskop	2
Laryngoscope / Laringoskop	2
Protoscope	2
Measuring tape	2
Laryngoscope	2

2. MEDICAL UNITS

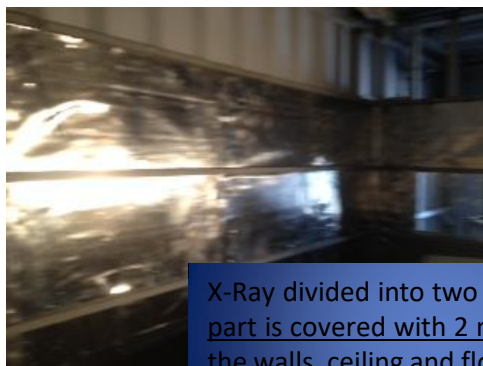
03 - RADIOLOGY (X-RAY)

CONTAINER SPECIFICATION

Floor	PVC 2 mm Anti bacterial-Static
Internal Wall	Outside Wall
50mm Polyuretane pannel	(2 mm thickness steel sheet)
Aluminium Window	Double Glassed Window
A / C CLIMA	Compact Air Condition
Lighting	2 lamps (2x36W each) Waterproof/Dust Proof Housing
Fire Extinguisher	6 kg Dry Chemical



DESCRIPTION	QTY.
X-ray mobile-digital	1
Portable X-ray For using ICU and Patient Wards	1
Utility trolley	1
Lead apron with rack	1
Protective equipment	1
Stretcher for x-ray	1
Folding screen	1
Computer, chairs, desk and drawers	1

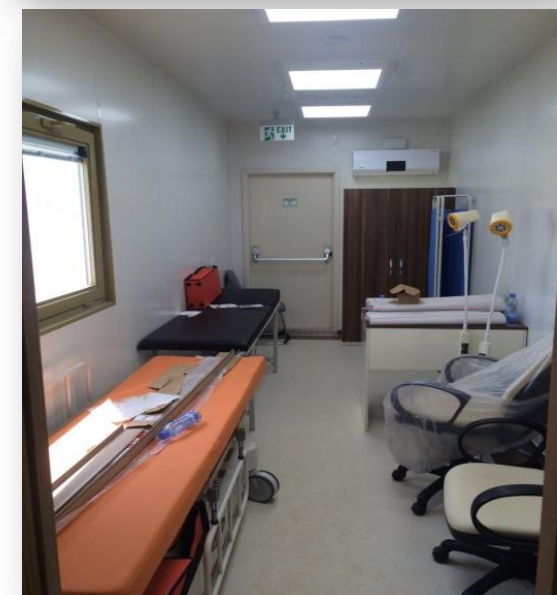


X-Ray divided into two parts. Radiology part is covered with 2 mm lead all over the walls, ceiling and floors.

2. MEDICAL UNITS

CONTAINER SPECIFICATION

Floor	PVC 2 mm Anti bacterial-Static
Internal Wall	Outside Wall
50mm Polyuretane pannel	(2 mm thickness steel sheet)
Aluminium Window	Double Glassed Window
A / C	Compact Air Condition
Lighting	2 lamps (2x36W each) Waterproof/Dust Proof Housing
Fire Extinguisher	6 kg Dry Chemical



04 - TRIAGE UNIT

DESCRIPTION	QTY.
Air Conditioning Unit	1
Medical Gas	1
Lamps	1
Smoke detector	1
Emergency beds and related equipments	1
Full trolley for Emergency	1
Incubation set	1
ECG machine	1
Vital signs monitor	1
Thermometers	2
Sphygmometers	2
Gynaecological speculum	2
Nebulizer	1
Defibrillator	1
Pulse oximeter	1
Laryngoscope	2
Protoscope	1
Measuring tape	2
Torch	2
Examination lamp	2
Miscellaneous (medical consumables)	2

MEDICAL UNITS

CONTAINER SPECIFICATION

Floor	PVC 2 mm Anti bacterial-Static
Internal Wall	Outside Wall
50mm Polyuretane pannel	(2 mm thickness steel sheet)
Aluminium Window	Double Glassed Window
A / C	Compact Air Condition
Lighting	2 lamps (2x36W each) Waterproof/Dust Proof Housing
Fire Extinguisher	6 kg Dry Chemical

DESCRIPTION

QTY.

Refrigerator for drugs	2
Refrigerator for blood/blood products	1
Medication Bins	15
Furniture	1
A/C Unit	2
Basic blood analyser and related equipment (Hb, blood count, blood biochemistry, etc)	1
Kits for HIV and other relevant tests	5
Microscope	2
Centrifuge	1
Urinalysis kit	1
Incubator	1
Supplies (tubes, reagents, etc)	1
Glucometer	1
Refrigerator	1
Freezer	1
Furniture	1

05 - LABORATORY and PHARMACY



DESCRIPTION

QTY.

ORIGIN

Drugs sections	1	TURKEY
Drugs equipment	1	TURKEY
Fridge	1	TURKEY
Furniture	1	TURKEY

2. MEDICAL UNITS

CONTAINER SPECIFICATION

Floor	PVC 2 mm Anti bacterial-Static
Internal Wall	Outside Wall
50mm Polyuretane pannel	(2 mm thickness steel sheet)
Aluminium Window	Double Glassed Window
A / C	Compact Air Condition
Lighting	2 lamps (2x36W each) Waterproof/Dust Proof Housing
Fire Extinguisher	6 kg Dry Chemical

DESCRIPTION	QTY.
Led TV	1
Over Table	1
Wardrobe	1
Shelves	1
Wc-Shower Sections	1

06 - DOCTOR ROOM



2. MEDICAL UNITS

CONTAINER SPECIFICATION

Floor	PVC 2 mm Anti bacterial-Static
Internal Wall	Outside Wall
50mm Polyuretane pannel	(2 mm thickness steel sheet)
Aluminium Window	Double Glassed Window
Lighting	2 lamps (2x36W each) Waterproof/Dust Proof Housing
Fire Extinguisher	6 kg Dry Chemical

EQUIPMENT	UNIT
Wc	1
Shower	1
Sink	1
Water Heater	1

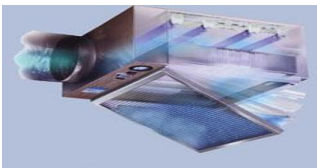
WC & SHOWER



AIR CONDITIONER & HEATING

System of conditioned air, air extractors and heating that allow the work within the all rooms that will be exhibited to room temperatures of - 20 °C to 50 °C. The rank of regulation of temperature in the interior will be included/understood enters the 15 °C 24 °C

48000 btu heating and cooling capacity
Channel type heating and cooling unit



Air circulation in the units shall be mounted.
HEPA FILTER SYSTEM

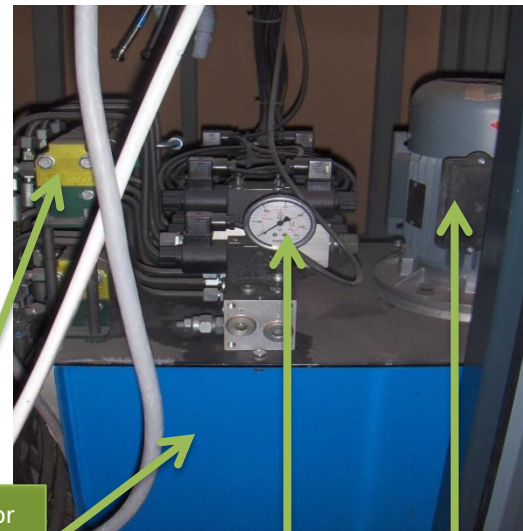


AIR CONDITION will be ceiling Channel type



4. HYDRAULIC SYSTEM

EQUIPMENTS	TECHNICAL PROPERTIES	LOCATION	QTY.
Motor	2.2 kW 220V	Technical Room	1
Hydraulic Tank	70 Liter	Technical Room	1
Flow seperator	4 valves for one output	Technical Room	1
Pressure Indicator	0-280 bar	Teknik Oda	1
Room piston	1600mm open	Under container rooms	4



Flow Seperator

Hydraulic Tank

Pressure indicator

Motor



doğadan